

TRANSFORMERS



TRANSFORMERS

Measurement transformers

TU_PS Narrow profile bus-bar 90

TU_PS Narrow profile bus-bar - Class 0,5s 91

TU_PS-3 Triple bus-bar narrow profile 92

TU40CP Wound primary or bus-bar 92

TU_ Wound primary 93

TU100PSH Narrow profile bus-bar 93

TU_ Bus-bar 94

TU_ Bus-bar - Class 0,5s 94

TL_ Wound primary 95

TL_ Bus-bar - Class 0,5s 95

TUC_ Bus-bar 96

TUC_ Bus-bar - Class 0,5s 97

TA_P Split core transformers 98

TA_P Mini split core transformers 99

TA_R Split core transformers 100

TU_R Measurement transformers - Resin 101

TU_R Measurement transformers - Resin. Class 0,5s 101

TUP_R Measurement transformers - Resin 102

TU_R Narrow profile - Resin 103

TU_ Narrow profile - Horizontal bar - Resin 104

TU_RV Low power - Class 0,5s 106

TU40RGV Low power - Class 0,2s 106

TUP80RV Low power - Class 0,2s 107

TA60RI Split core transformer 107

TU60PRI Measurement transformer - Resin 108

TU40RGI LV advanced monitoring 108

Protection transformers

TUC_ Bus-bar (Protection) 109

TL_ Bus-bar (Protection) 109

TU_CP Wound primary (Protection) 110

TU_R Wound primary (Protection) - Resin 110

TUP_R Bus-bar (Protection) - Resin 111

TPR_ Bus-bar (Protection) - Resin 112

TEH-132 Hall effect sensor 112

Other transformers

TC_ Trafo-converters 113

TC_CV Trafo-converters 113

TE108 Voltage transformers 114

TE15P Voltage transformers 114

TS_ Summation transformers 115

TRS_ Summation transformers - Resin 115

TRANSFORMERS

TU_PS Narrow profile bus-bar

Current transformers



General features

Measuring transformer for cable or bus-bar. Its narrow profile design allows a better adaptation to the frame due to its reduced dimensions.

- **Secondary:** .../5A
.../1A
- **Accuracy:** 0,5 - 1 - 3
- **Plastic casing**
- **Resin encapsulated option**

TU20PS		Bus-bar 20 x 6 mm or cable Ø 18 mm									
In / A		30	40	50	60	75	100	125	150	200	250
Class 0,5	VA							1,5	2,5	3,75	5
Class 1	VA				1	1,5	1,5	2,5	3,75	5	7,5
Class 3	VA	0,5	1	1	1,5	1,5	2,5	3,75	5	5	7,5

TU30PS		Bus-bar 30 x 10 mm or cable Ø 25 mm									
In / A		100	125	150	200	250	300	400	500	600	
Class 0,5	VA			1,5	2,5	3,75	3,75	3,75	5	5	
Class 1	VA	1,5	1,5	2,5	3,75	5	5	5	7,5	7,5	

TU40PS		Bus-bar 40 x 10 mm or cable Ø 30 mm									
In / A		150	200	250	300	400	500	600	750	800	
Class 0,5	VA		2,5	2,5	5	5	5	5	5	5	
Class 1	VA	2	3,75	3,75	5	5	7,5	7,5	7,5	7,5	

TU50PS		Bus-bar 50 x 10 mm or cable Ø 40 mm									
In / A		400	500	600	750	800	1000				
Class 0,5	VA	3,75	5	7,5	7,5	7,5	10				
Class 1	VA	5	7,5	10	10	10	15				

TU60PS		Bus-bar 60 x 10 mm or cable Ø 50 mm									
In / A		400	500	600	750	800	1000	1200	1500	1600	
Class 0,5	VA	5	5	5	5	7,5	10	15	15	15	
Class 1	VA	5	7,5	7,5	7,5	10	15	20	20	20	

TU80PS		Bus-bar 80 x 30 mm or cable Ø 70 mm									
In / A		400	500	600	750	800	1000	1200	1500	1600	2000
Class 0,5	VA	5	5	7,5	7,5	7,5	10	15	15	15	15
Class 1	VA	7,5	7,5	10	10	10	15	20	20	20	20

TU100PS		Bus-bar 100 x 30 mm										
In / A		500	600	750	800	1000	1200	1500	1600	2000	2500	3000
Class 0,5	VA	5	7,5	7,5	7,5	10	15	15	15	15	20	20
Class 1	VA	7,5	10	10	10	15	20	20	20	20	25	25

TU125PS		Bus-bar 125 x 50 mm											
In / A		500	600	750	800	1000	1200	1500	1600	2000	2500	3000	4000
Class 0,5	VA	5	5	7,5	7,5	10	15	15	15	20	20	20	25
Class 1	VA	7,5	7,5	10	10	15	20	20	20	20	25	25	30

TU_PS Narrow profile bus-bar



Current transformers - Class 0,5s - 0,2 - 0,2s



General features

Measuring transformer for cable or bus-bar. Its narrow profile design allows a better adaptation to the frame due to its reduced dimensions.

- **Secondary:** .../5A
- **Accuracy:** 0,5s - 0,2 - 0,2s
- **Plastic casing**
- **Resin encapsulated option**

TU20PS		Bus-bar 20 x 6 mm or cable Ø 18 mm		
In (A)		150	200	250
Class 0,5s	VA	2,5	2,5	5
Class 0,2	VA	2,5	3,75	5

TU60PS		Bus-bar 60 x 10 mm or cable Ø 50 mm				
In (A)		500	600	800	1000	1200
Class 0,5s	VA	5	5	5	7,5	7,5
Class 0,2	VA	5	5	5	5	10
Class 0,2s	VA	5	5	5	5	5

TU80PS		Bus-bar 80 x 30 mm or cable Ø 70 mm							
In (A)		600	750	800	1000	1200	1500	1600	2000
Class 0,5s	VA	5	7,5	5	10	10	15	15	15
Class 0,2	VA	5	7,5	7,5	10	10	15	15	15
Class 0,2s	VA				5	5	5	5	10

TU100PS		Bus-bar 100 x 30 mm									
In (A)		750	800	100	1200	1500	1600	2000	2400	2500	3000
Class 0,5s	VA	7,5	7,5	10	10	15	15	15	15	20	20
Class 0,2	VA	7,5	7,5	10	10	15	15	15	15	20	20
Class 0,2s	VA			7,5	10	15	15	15	5	15	20

TU125PS		Bus-bar 125 x 50 mm							
In (A)		1200	1500	1600	2000	2400	2500	3000	
Class 0,5s	VA	5	10	10	15	15	15	15	
Class 0,2	VA		10	10	15	15	15	15	
Class 0,2s	VA		5	5	5	5	15	10	

TU_PS-3 Narrow profile - triple bus-bar

Current transformers



General features

- **Secondary:** .../5A
.../1A
- **Accuracy:** 0,5 - 1 - 3
- **Plastic casing**
- **Resin encapsulated option**

TU20PS-3		Bus-bar 20 x 6 mm or cable Ø 18 mm									
In / A		30	40	50	60	75	100	125	150	200	250
Class 0,5	VA							1	1	1,5	2,5
Class 1	VA				1	1	1,25	1,5	1,5	2,5	3,75
Class 3	VA	0,5	1	1	1	1,5	1,5	2,5	2,5	3,75	5

TU30PS-3		Bus-bar 30 x 10 mm or cable Ø 25 mm							
In / A		150	200	250	300	400	500	600	
Class 0,5	VA					2,5	2,5	3,75	5
Class 1	VA	1,5	2,5	2,5	2,5	2,5	3,75		

TU40CP Wound primary or bus-bar

Current transformer



General features

- **Secondary:** .../5A
.../1A
- **Accuracy:** 0,5 - 1
- **Plastic casing**
- **Resin encapsulated option**

TU40CP		Wound primary												
In / A		5	10	15	20	25	30	40	50	60	75	100	125	150
Class 0,5	VA							5						
Class 1	VA							7,5						

TU40CP		Bus-bar 40 x 10 mm or cable Ø 30 mm					
In / A		200	250	300	400	500	600
Class 0,5	VA				5		
Class 1	VA				7,5		

TU_ Wound primary

Current transformers



General features

- **Secondary:** .../5A
.../1A
- **Accuracy:** 0,5 - 1
- **Plastic casing**
- **Resin encapsulated option**

TU3baP		Bus-bar 4x25 mm															
In / A		5	10	15	20	25	30	40	50	60	75	100	125	150	200	250	300
Class 0,5	VA	5															
Class 1	VA	7,5															

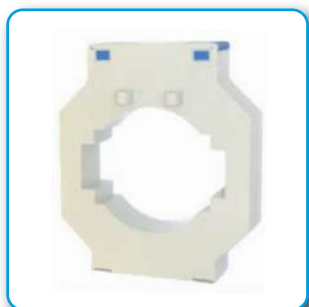
TU3bP		Bus-bar 4x25 mm															
In / A		5	10	15	20	25	30	40	50	60	75	100	125	150	200	250	300
Class 0,5	VA	10															
Class 1	VA	15															

TU3bcP		Bus-bar 4x25 mm																
In / A		5	10	15	20	25	30	40	50	60	75	100	125	150	200	250	300	400
Class 0,5	VA	15																
Class 1	VA	20																

TU3aP		Wound primary																
In / A		5	10	15	20	25	30	40	50	60	75	80	100	125	150	200	250	300
Class 0,5	VA	2,5																
Class 1	VA	5																

TU100PSH Narrow profile bus-bar

Current transformers



General features

- **Secondary:** .../5A
.../1A
- **Accuracy:** 0,5 - 1
- **Plastic casing**
- **Resin encapsulated option**

TU100PSH		Bus-bar 100 x 80 mm or cable Ø 85 mm													
In / A		400	500	600	750	800	1000	1200	1500	1600	2000	2500	3000	4000	5000
Class 0,5	VA	5	7,5	7,5	7,5	7,5	10	15	15	10	15	20	20	25	25
Class 1	VA	7,5	10	10	10	10	15	20	20	15	20	25	25	30	30

TU_Bus-bar

Current transformers



General features

- **Secondary:** .../5A
.../1A
- **Accuracy:** 0,5 - 1 - 3
0,5s - 0,2 - 0,2s
- **Plastic casing**
- **Resin encapsulated option**

TU20		Bus-bar 20 x 5 mm or cable Ø 16 mm									
In / A		30	40	50	60	75	100	125	150	200	250
Class 0,5	VA								3,75	5	7,5
Class 1	VA				1	1,5	2,5	3,75	5	7,5	10
Class 3	VA	1	1	1	2	2,5	3,75	5	7,5	10	15

TU30		Bus-bar 30 x 10 mm or cable Ø 22 mm								
In / A		100	125	150	200	250	300	400	500	600
Class 0,5	VA			1,5	2,5	3,75	3,75	3,75	5	5
Class 1	VA	1,25	1,25	2,5	3,75	5	5	5	7,5	7,5
Class 3	VA	2,5	2,5	3,75	5	7,5	7,5	7,5	10	10

TU40		Bus-bar 40 x 10 mm or cable Ø 30 mm														
In / A		50	60	75	100	125	150	200	250	300	400	500	600	750	800	1000
Class 0,5	VA				1	2,5	3,75	3,75	5	7,5	10	10	10	10	15	15
Class 1	VA	0,75	1,25	2	3	3,75	5	5	7,5	10	15	15	15	15	20	20
Class 3	VA	1,5	2	3,75	5	5	7,5	7,5	10	15	20	20	20	20	30	30

Class 0,5s - 0,2 - 0,2s

TU20		Bus-bar 20 x 5 mm or Cable 16 mm								
In (A)		150			200			250		
Class 0,5s	VA	2,5			3,75			5		
Class 0,2	VA	2,5			3,75			5		
Class 0,2s	VA	2,5								

TU40		Bus-bar 40 x 10 mm or Cable 30 mm				
In (A)		400	500	600	800	1000
Class 0,5s	VA	5	5	5	5	5
Class 0,2	VA	5	5	5	5	5
Class 0,2s	VA	5	5	5	5	5

TL_Bus-bar

Current transformers



General features

- **Secondary:** .../5A
.../1A
- **Accuracy:** 0,5 - 1 - 3
0,5s - 0,2 - 0,2s
- **Plastic casing**

TL2		Bus-bar 100 X 20 mm or cable Ø 20 mm					
In / A		750	800	1000	1200	1500	2000
Class 0,5	VA	10	15	20	20	30	30
Class 1	VA	20	20	30	30	45	60
Class 3	VA	30	30	45	45	60	90

TL3		Bus-bar 100 x 30 mm or cable Ø 30 mm			
In / A		1500	2000	2500	3000
Class 0,5	VA	10	15	25	30
Class 1	VA	20	25	30	45
Class 3	VA	30	40	45	60

TL4		Bus-bar 100 x 60 mm or cable Ø 60 mm				
In / A		2000	2500	3000	4000	5000
Class 0,5	VA	10	10	20	30	30
Class 1	VA	20	20	30	60	60
Class 3	VA	30	30	45	90	90

Class 0,5s - 0,2 - 0,2s

TL2		Bus-bar 100 x 20 mm or cable Ø 20 mm							
In (A)		750	800	1000	1200	1500	1600	2000	2400
Class 0,5s	VA	5	5	10	10	10	10	15	15
Class 0,2	VA	5	5	7,5	7,5	10	15	30	15
Class 0,2s	VA		5	10	30	5	5	5	5

TL3		Bus-bar 100 x 30 mm or cable Ø 30 mm					
In (A)		1500	1600	2000	2400	2500	3000
Class 0,5s	VA	10	15	15	15	15	15
Class 0,2	VA	10	20	30	15	25	30
Class 0,2s	VA	5	20	5	30	30	10

TL4		Bus-bar 100 x 60 mm or cable Ø 60 mm					
In (A)		1500	1600	2000	2400	2500	3000
Class 0,5s	VA	10	10	15	15	15	15
Class 0,2	VA	10	10	15	15	15	15
Class 0,2s	VA	5	5	5	5	10	10

TUC_ Bus-bar

Current transformer



General features

- Secondary: .../5A
.../1A
- Accuracy: 0,5 - 1 - 3
- Plastic casing
- Resin encapsulated option

TUC30		Bus-bar 30 x 10 mm or cable Ø 25 mm					
In / A		200	250	300	400	500	600
Class 0,5	VA	15	15	15	15	15	15
Class 1	VA	20	20	20	20	20	20
Class 3	VA	30	30	30	30	30	30

TUC40		Bus-bar 40 x 10 mm or cable Ø 32 mm														
In / A		50	60	75	100	125	150	200	250	300	400	500	600	750	800	1000
Class 0,5	VA				1	2,5	3,75	3,75	5	7,5	10	10	10	10	15	15
Class 1	VA	0,75	1,25	2	3	3,75	5	5	7,5	10	15	15	15	15	20	20
Class 3	VA	1,5	2	3,75	5	5	7,5	7,5	10	15	20	20	20	20	30	30

TUC50		Bus-bar 50 x 10 mm or cable Ø 40 mm								
In / A		400	500	600	750	800	1000	1200	1500	2000
Class 0,5	VA	10	10	10	10	10	10	10	10	10

TUC60		Bus-bar 60 x 10 mm or cable Ø 51 mm								
In / A		400	500	600	750	800	1000	1200	1500	2000
Class 0,5	VA	15	15	15	15	15	15	15	15	15
Class 1	VA	20	20	20	20	20	20	20	20	20
Class 3	VA	30	30	30	30	30	30	30	30	30

TUC80		Bus-bar 80 x 30 mm or cable Ø 65 mm									
In / A		400	500	600	750	800	1000	1200	1500	2000	2500
Class 0,5	VA	15	15	15	15	15	15	15	15	15	15
Class 1	VA	20	20	20	20	20	20	20	20	20	20
Class 3	VA	30	30	30	30	30	30	30	30	30	30

TUC_Bus-bar

Current transformers - Class 0,5s - 0,2 - 0,2s



General features

- **Secondary:** .../5A
- **Accuracy:** 0,5s - 0,2 - 0,2s
- **Plastic casing**
- **Resin encapsulated option**

TUC30		Bus-bar 30 x 10 mm or cable Ø 25 mm						
In (A)		150	200	250	300	400	500	600
Class 0,5s	VA	5	10	10	5	10	10	5
Class 0,2	VA	5	5	5	7,5	5	5	5
Class 0,2s	VA	5	5	5	5	5	5	5

TUC40		Bus-bar 40 x 10 mm or cable Ø 32 mm								
In (A)		150	200	250	300	400	500	750	800	1000
Class 0,5s	VA	7,5	10	7,5	10	5	5	5	5	5
Class 0,2	VA	1		5	7,5	5	5	10	5	5
Class 0,2s	VA	5	5		5	5	5	5	5	5

TUC60		Bus-bar 60 x 10 mm or cable Ø 51 mm									
In (A)		400	500	600	750	800	1000	1200	1500	2000	
Class 0,5s	VA	5	5	5	5	5	10	10	10	15	
Class 0,2	VA	5	5	5	5	5	10	10	10	10	
Class 0,2s	VA	5	5	5	5	5	5	5	5	5	

TUC80		Bus-bar 80 x 30 mm or cable Ø 65 mm											
In (A)		400	500	600	750	800	1000	1200	1500	2000	2500	3000	
Class 0,5s	VA	10	74,5	15	10	15	5	15	10	15	15	15	
Class 0,2	VA	7,5	7,5	10	10	10	15	15	15	15	15	15	
Class 0,2s	VA					7,5	7,5	7,5	15	15	15	15	

TRANSFORMERS

TA_P Split core transformers

Current transformers



General features

- **Secondary:** .../5A
.../1A
.../250mA
- **Accuracy:** 0,5 - 1 - 3
- **Plastic casing**
- **Resin encapsulated option**
- **With built-in cable option**

TA30P		Bus-bar 30 x 20 mm or cable Ø 20 mm					
In / A		100	150	200	250	300	400
Class 0,5	VA					2,5	3,75
Class 1	VA			2,5	3,75	4	5
Class 3	VA	3	3,75	4	5	6	10

TA60P		Bus-bar 60 x 30 mm or cable Ø 30 mm							
In / A		250	300	400	500	600	750	800	1000
Class 0,5	VA			2,5	3,75	5	7,5	7,5	10
Class 1	VA	2,5	3,75	3,75	5	7,5	10	10	15
Class 3	VA	3,75	5	7,5	15	20	20	20	20

TA80P		Bus-bar 80 x 50 mm or cable Ø 50 mm							
In / A		250	300	400	500	600	750	800	1000
Class 0,5	VA			2,5	3,75	5	7,5	7,5	10
Class 1	VA	2,5	3,75	3,75	5	7,5	10	10	15
Class 3	VA	3,75	5	7,5	15	20	20	20	20

TA100P		Bus-bar 100 x 80 mm or cable Ø 80 mm										
In / A		250	300	400	500	600	750	800	1000	1200	1500	2000
Class 0,5	VA			2,5	3,75	5	7,5	7,5	10	15	15	20
Class 1	VA	2,5	3,75	3,75	5	7,5	10	10	15	20	20	30
Class 3	VA	3,75	5	7,5	15	20	20	20	20	30	30	45

TA125P		Bus-bar 125 x 80 mm or cable Ø 80 mm									
In / A		500	600	750	800	1000	1200	1500	2000	2500	3000
Class 0,5	VA			5	7,5	10	15	20	25	25	30
Class 1	VA	5	5	10	10	20	20	30	30	30	45
Class 3	VA	7,5	15	20	20	30	30	45	45	45	60

TA160P		Bus-bar 160 x 80 mm or cable Ø 80 mm											
In / A		500	600	750	800	1000	1200	1500	2000	2500	3000	4000	5000
Class 0,5	VA	2,5	3,75	5	7,5	10	15	20	25	25	30	30	30
Class 1	VA	3,75	5	10	10	20	20	30	30	30	45	45	45
Class 3	VA	7,5	10	20	20	30	30	45	45	45	60	60	60

Other specialities on request, consult us.

TA_P Mini open core transformers

Current transformers



General features

- **Secondary:** .../5A
.../1A
.../250mA
.../333mV
- **Precision:** 0,5 - 1 - 3
- **Plastic casing**

TA10P		Cable Ø 10 mm						
333mV - In / A		20	30	40	50			
Output	mV		333					

TA16P		Cable Ø 16 mm						
333mV - In / A		40	50	60	75	100		
Output	mV		333					

TA24P*		Cable Ø 24 mm						
In / A		50	75	100	150	200	250	300
Class 1	VA	1	1	1	1	1	1	1,5

TA36P*		Cable Ø 36 mm									
In / A		50	75	100	150	200	250	300	400	500	600
Class 0,5	VA					1	1	1	2,5	5	5
Class 1	VA	1	1	1	1	1	1	1,5	5	7,5	10

TA50P		Cable Ø 52 mm				
In / A		500	600	750	800	1000
Class 0,5	VA	2,5	2,5	2,5	2,5	2,5
Class 1	VA	5	5	5	5	5

*Possibility of manufacture with terminals instead of cable.

TRANSFORMERS

TA_R Split core transformers

Current transformers



General features

- **Secondary:** .../5A
.../1A
- **Accuracy:** 0,5 - 1 - 3
- **Resin encapsulated**

TA30R		Bus-bar 30 x 20 mm or cable Ø 20 mm					
In / A		100	150	200	250	300	400
Class 0,5	VA					2,5	3,75
Class 1	VA			2,5	3,75	4	5
Class 3	VA	3	3,75	4	5	6	10

TA60R*		Bus-bar 60 x 30 mm or cable Ø 32 mm							
In / A		250	300	400	500	600	750	800	1000
Class 0,5	VA			2,5	3,75	5	7,5	7,5	10
Class 1	VA	2,5	3,75	3,75	5	7,5	10	10	15
Class 3	VA	3,75	5	7,5	15	20	20	20	20

TA80R*		Bus-bar 80 x 50 mm or cable Ø 50 mm							
In / A		250	300	400	500	600	750	800	1000
Class 0,5	VA			2,5	3,75	5	7,5	7,5	10
Class 1	VA	2,5	3,75	3,75	5	7,5	10	10	15
Class 3	VA	3,75	5	7,5	15	20	20	20	20

TA100R		Bus-bar 100 x 80 mm or cable Ø 80 mm										
In / A		250	300	400	500	600	750	800	1000	1200	1500	2000
Class 0,5	VA			2,5	3,75	5	7,5	7,5	10	15	15	20
Class 1	VA	2,5	3,75	3,75	5	7,5	10	10	15	20	20	30
Class 3	VA	3,75	5	7,5	15	20	20	20	20	30	30	45

TA125R		Bus-bar 125 x 80 mm or cable Ø 80 mm									
In / A		500	600	750	800	1000	1200	1500	2000	2500	3000
Class 0,5	VA			5	7,5	10	15	20	25	25	30
Class 1	VA	5	5	10	10	20	20	30	30	30	45
Class 3	VA	7,5	15	20	20	30	30	45	45	45	60

TA160R		Bus-bar 160 x 80 mm or cable Ø 80 mm											
In / A		500	600	750	800	1000	1200	1500	2000	2500	3000	4000	5000
Class 0,5	VA	2,5	3,75	5	7,5	10	15	20	25	25	30	30	30
Class 1	VA	3,75	5	10	10	20	20	30	30	30	45	45	45
Class 3	VA	7,5	10	20	20	30	30	45	45	45	60	60	60

(*) With built-in cable option

TU_R Wound primary

Current transformers



General features

- **Secondary:** .../5A
.../1A
- **Accuracy:** 0,5 - 1
- **Resin encapsulated**

TU3R		Wound primary											
In / A		50	60	75	100	125	150	200	250	300	400	500	600
Class 0,5	VA	15	15	15	15	15	15	15	15	15	15	15	15
Class 1	VA	25	25	25	25	25	25	25	25	25	25	25	25

TU50R		Wound primary					
In / A		400	500	600	750	800	
Class 0,5	VA	15	15	15	15	15	
Class 1	VA	25	25	25	25	25	

TU_R Wound primary or Bus-bar

Current transformers - Class 0,5s



General features

- **Secondary:** .../5A
- **Extended range:** 150%
- **Accuracy:** 0,5s
- **Resin encapsulated**

TU3R		Wound primary											
In / A		50	60	75	100	125	150	200	250	300	400	500	600
Class 0,5s	VA	10	10	10	10	10	10	10	10	10	10	10	10
Class 0,5s	VA	2,5	2,5	2,5	2,5	2,5	2,5	2,5	2,5	2,5	2,5	2,5	2,5

TUP20R		Bus-bar 100 x 20 mm or cable Ø 20 mm					
In / A		750	800	1000	1200	1500	2000
Class 0,5s	VA	10	10	10	10	10	10
Class 0,5s	VA	2,5	2,5	2,5	2,5	2,5	2,5

TUP_R Bus-bar

Current transformers



General features

- **Secondary:** .../5A
.../1A
- **Accuracy:** 0,5 - 1
- **Resin encapsulated**

TUP20RC		Bus-bar 80 x 20 mm or cable Ø 20 mm						
In / A		500	600	750	800	1000	1200	1500
Class 0,5	VA	10	15	15	15	15	15	15
Class 1	VA	15	25	25	25	25	25	25

TUP20R		Bus-bar 100 x 20 mm or cable Ø 20 mm					
In / A		750	800	1000	1200	1500	2000
Class 0,5	VA	15	15	15	15	15	15
Class 1	VA	25	25	25	25	25	25

TUP60R		Bus-bar 100 x 60 mm or cable Ø 60 mm				
In / A		2000	2500	3000	4000	5000
Class 0,5	VA	15	15	15	15	15
Class 1	VA	25	25	25	25	25

TUP95R		Bus-bar 100 x 95 mm or cable Ø 95 mm		
In / A		3000	4000	5000
Class 0,5	VA	15	15	15
Class 1	VA	25	25	25

TRANSFORMERS

TU_R - Narrow profile - Bus-bar

Current transformers



General features

- **Secondary:** .../5A
.../1A
- **Accuracy:** 0,5 - 1 - 3
- **Resin encapsulated**

TU30R		Bus-bar 30 X 20 mm or cable Ø 20 mm					
In / A		100	150	200	250	300	400
Class 0,5	VA				5	5	7,5
Class 1	VA		3,75	5	7,5	7,5	10
Class 3	VA	3,75	5	7,5	10	10	15

TU60R		Bus-bar 60 x 30 mm or cable Ø 30 mm							
In / A		250	300	400	500	600	750	800	1000
Class 0,5	VA	2,5	3,75	5	7,5	10	15	15	15
Class 1	VA	3,75	5	7,5	10	15	20	20	20
Class 3	VA	5	7,5	10	15	20	30	30	30

TU80R		Bus-bar 80 x 50 mm or cable Ø 50 mm							
In / A		250	300	400	500	600	750	800	1000
Class 0,5	VA	2,5	3,75	5	7,5	10	15	15	15
Class 1	VA	3,75	5	7,5	10	15	20	20	20
Class 3	VA	5	7,5	10	15	20	30	30	30

TU100R		Bus-bar 100 x 80 mm or cable Ø 80 mm										
In / A		250	300	400	500	600	750	800	1000	1200	1500	2000
Class 0,5	VA	2,5	3,75	5	7,5	10	15	15	15	15	15	15
Class 1	VA	3,75	5	7,5	10	15	20	20	20	20	20	20
Class 3	VA	5	7,5	10	15	20	30	30	30	30	30	30

TU125R		Bus-bar 125 x 80 mm or cable Ø 80 mm										
In / A		500	600	750	800	1000	1200	1500	2000	2500	3000	4000
Class 0,5	VA	10	15	15	15	15	15	15	15	15	15	15
Class 1	VA	15	20	20	20	20	20	20	20	20	20	20
Class 3	VA	20	30	30	30	30	30	30	30	30	30	30

TU160R		Bus-bar 160 x 80 mm or cable Ø 80 mm											
In / A		500	600	750	800	1000	1200	1500	2000	2500	3000	4000	5000
Class 0,5	VA	10	15	15	15	15	15	15	15	15	15	15	15
Class 1	VA	15	20	20	20	20	20	20	20	20	20	20	20
Class 3	VA	20	30	30	30	30	30	30	30	30	30	30	30

TRANSFORMERS

TU_ Narrow profile - Bus-bar

Current transformer - Horizontal bar



General features

- **Secondary:** .../5A
.../1A
- **Accuracy:** 0,5 - 1 - 3
- **Resin encapsulated**

TU40RS		Bus-bar 40 x 10 mm or cable Ø 25 mm							
In / A		300	400	500	600	750	800	1000	
Class 0,5	VA	10	10	10	10	10	10	10	10
Class 1	VA	15	15	15	15	15	15	15	15
Class 3	VA	20	20	20	20	20	20	20	20

TU40RSD*		Bus-bar 37 x 18 mm or cable Ø 36 mm								
In / A		200	250	300	400	500	600	750	800	1000
Class 0,5	VA	5	5	10	10	10	10	10	10	10
Class 1	VA	7,5	7,5	15	15	15	15	15	15	15
Class 3	VA	10	10	20	20	20	20	20	20	20

(*) With built-in cable option

TU60RS		Bus-bar 15 x 60 mm or cable Ø 45 mm								
In / A		400	500	600	750	800	1000	1200	1500	2000
Class 0,5	VA	5	7,5	10	10	10	10	10	10	10
Class 1	VA	7,5	10	15	15	15	15	15	15	15
Class 3	VA	10	15	20	20	20	20	20	20	20

TU80RS		Bus-bar 50 x 80 mm or cable Ø 50 mm									
In / A		400	500	600	750	800	1000	1200	1500	2000	2500
Class 0,5	VA	5	5	10	10	10	10	10	10	10	10
Class 1	VA	7,5	7,5	15	15	15	15	15	15	15	15
Class 3	VA	10	15	20	20	20	20	20	20	20	20

TU100RS		Bus-bar 60 x 100 mm or cable Ø 60 mm								
In / A		750	800	1000	1200	1500	2000	2500	3000	
Class 0,5	VA	15	15	15	15	15	15	15	15	15
Class 1	VA	20	20	20	20	20	20	20	20	20
Class 3	VA	30	30	30	30	30	30	30	30	30

TU125RS		Bus-bar 80 x 125 mm or cable Ø 80 mm					
In / A		2000	2500	3000	4000	5000	6000
Class 0,5	VA	15	15	15	15	15	15
Class 1	VA	20	20	20	20	20	20
Class 3	VA	30	30	30	30	30	30

TU_ Narrow profile - Bus-bar

Current transformers - Horizontal bar



General features

- **Secondary:** .../5A
.../1A
- **Accuracy:** 0,5 - 1 - 3
- **Resin encapsulated**

TU100RT		Bus-bar 100 x 20 mm or cable Ø 20 mm						
In / A		750	800	1000	1200	1500	2000	
Class 0,5	VA	10	15	20	20	30	30	
Class 1	VA	20	20	30	30	45	60	
Class 3	VA	30	30	45	45	60	90	

TU100RTC		Bus-bar 20 x 100 mm or cable Ø 20 mm							
In / A		750	800	1000	1200	1500	2000	2500	3000
Class 0,5	VA	10	15	20	20	30	30	30	30
Class 1	VA	20	20	30	30	45	45	45	45
Class 3	VA	30	30	45	45	60	60	60	60

TU125RT*		Bus-bar 125 x 35 mm or cable Ø 35 mm						
In / A		800	1000	1200	1500	2000	2500	3000
Class 0,5	VA	7,5	7,5	7,5	10	15	20	25
Class 1	VA	10	10	10	15	20	25	30
Class 3	VA	15	15	15	20	30	30	40

(*) With built-in cable

TU125RTC		Bus-bar 35 x 125 mm or cable Ø 35 mm						
In / A		800	1000	1200	1500	2000	2500	3000
Class 0,5	VA	7,5	7,5	7,5	10	15	20	25
Class 1	VA	10	10	10	15	20	25	30
Class 3	VA	15	15	15	20	30	30	45

TU_RV Low power transformers

Current transformers - Class 0,5s



General features

Low power current transformers designed to be installed in low voltage or directly on insulated medium voltage cables.

- **Continuous overload:** 1,5x I_n
- **Short circuit current I_{th}:** 60 x I_n
- **Rated dynamic current:** 2,5x I_{th}
- **Operating voltage:** 720 V AC
- **Connection:** RJ45 connector
- **Permissible load:** ≥10 kΩ
- **Test voltage:** 3kV, 1 min.
- **Insulation class:** E
- **Protection degree:** IP65
- **Resin encapsulated**

TU40RGV		Cable Ø 40 mm					
In / A	300	400	500	600	750	800	1000
Output /mV	225						

TU60PRV		Cable Ø 61 mm								
In / A	300	400	500	600	750	800	1000	1200	1500	1600
Output /mV	225									

TUP85RV		Cable Ø 85 mm							
In / A	400	500	600	750	800	1000	1200	1500	2000
Output /mV	225								

TUP140RV		Cable Ø 140 mm								
In / A	500	600	750	800	1000	1200	1500	2000	2500	3000
Output /mV	225									

TU40RGV Low power transformers

Current transformers - Class 0,2s



General features

Low power current transformers designed to be installed directly on low voltage cables for advanced monitoring. Built-in cable.

*Measurement of neutral current.

- **Continuous overload:** 1,5x I_n
- **Short circuit current I_{th}:** 60 x I_n
- **Rated dynamic current:** 2,5x I_{th}
- **Operating voltage:** 720 V AC
- **Connection:** RJ45 connector
- **Permissible load:** ≥10 kΩ
- **Test voltage:** 3kV, 1 min.
- **Insulation class:** B
- **Protection degree:** IP65
- **Resin encapsulated**

TU40RGV		Cable Ø 40 mm	
In / A		50	
Output /mV		225	

TUP80RV Low power transformers

Current transformers - Class 0,2s



General features

Low power current transformers designed for Smart Grid monitoring.

They are installed directly on the insulated medium voltage cables.

*Mounting on the cover bus-bar.

- **Continuous overload:** 1,5x I_n
- **Short circuit current I_{th}:** 60 x I_n
- **Rated dynamic current:** 2,5x I_{th}
- **Operating voltage:** 720 V AC
- **Connection:** Connector RJ45
- **Permissible load:** ≥10 kΩ
- **Test current:** 3kV, 1 min.
- **Insulation class:** B
- **Protection degree:** IP65
- **Resin encapsulated**

TUP80RV		Cable Ø 83 mm			
	Built-in cable		RJ45 Terminal		
In / A	500	1000	500	1000	
Output /mV			225		

TA60RI Split core transformer

Current transformers



General features

Resin encapsulated open core transformer, 150% extended range with built-in 6 metre cable (2x2.5mm²). Built-in cable.

- **Continuous overload:** 1,5x I_n
- **Rated short-circuit thermal current:** 60 x I_n
- **Rated dynamic current:** 2,5x I_{th}
- **Operating voltage:** 720 V AC
- **Test voltage:** 3kV, 1 min.
- **Insulation class:** A
- **Protection degree:** IP65
- **Resin encapsulated**

TA60RI		Bus-bar 30x60 mm or cable Ø 30 mm	
I _{pn} / I _{sn} (A)		400/5	
Class 0,5	VA	3,75*	

*At the beginning of the cable

TRANSFORMERS

TU60PRI Resin encapsulated transformers



Current transformers



General features

Resin encapsulated transformer, 150% extended range with built-in cable:
 - 6 metres (2x1,5mm² or 2x2,5mm²)
 - 10 metres (2x2,5mm)

- **Continuous overload:** 1,5x I_n
- **Rated dynamic current:** 2,5x I_{th}
- **Operating voltage:** 720 V AC
- **Insulation class:** A
- **Test voltage:** 3kV, 1 min.
- **Protection degree:** IP65
- **Resin encapsulated**
- **Rated short-circuit thermal withstand current:** 60 x I_n

TU60PRI		Cable Ø 62 mm
I _{pn} / I _{sn} (A)		400/5
Class 0,5s	VA	5*

*At the beginning of the cable

TU40RGI LV advanced monitoring

Current transformers



General features

Current transformer for advanced low voltage monitoring. Supplied with embedded cable with a length of 2, 3, 5 or 10 metres, with a 2-wire cable of 2.5mm² cross-section.

*Measurement of neutral current.

- **Rated current:** 0,4%. Error less than 10%
- **Rated short-circuit thermal withstand current (I_{th}):** 15kA, 1 seg.
- **Rated dynamic current:** 2,5 x I_{th}
- **Resin encapsulated**

TU40RGI		Cable Ø 40 mm
I _n / A		50
Class 1	VA	0,25

TRANSFORMERS

TUC_Bus-bar

Protection transformers



General features

- **Secondary:** .../5A
- **Accuracy:** 5P10 - 10P10
- **Plastic casing**

TUC30		Bus-bar 30 x 10 mm or cable Ø 25 mm										
In / A		200					250					300
5P10	VA	2,5					5					5
10P10	VA	5					5					7,5

TUC60		Bus-bar 60 x 10 mm or cable Ø 51 mm											
In / A		200	250	300	400	500	600	750	800	1000	1200	1500	2000
5P10	VA	3,5	3,5	5	5	5	7,5	7,5	10	10	10	10	10
10P10	VA	3,5	3,5	5	5	7,5	10	10	10	10	10	12,5	12,5

TUC80		Bus-bar 80 x 30 mm or cable Ø 65 mm												
In / A		200	250	300	400	500	600	750	800	1000	1200	1500	2000	2500
5P10	VA	3,5	3,5	5	5	5	7,5	7,5	10	10	10	10	10	10
10P10	VA	3,5	3,5	5	5	7,5	10	10	10	10	10	12,5	12,5	12,5

TL_Bus-bar

Protection transformers



General features

- **Secondary:** .../5A
- **Accuracy:** 5P10 - 10P10
- **Plastic casing**

TL2		Bus-bar 100 x 20 mm or cable Ø 20 mm										
In / A		2000					2500					
5P10	VA	5					5					
10P10	VA	7,5					7,5					

TL3		Bus-bar 100 x 30 mm or cable Ø 30 mm											
In / A		2500					3000						
5P10	VA	7,5					7,5						
10P10	VA	10					10						

TL4		Bus-bar 100 x 60 mm or cable Ø 60 mm										
In / A		3000					4000					5000
5P10	VA	5					7,5					7,5
10P10	VA	7,5					10					10

TU_CP Wound primary

Protection transformers



General features

- **Secondary:** .../5A
.../1A
- **Accuracy:** 5P10 - 10P10
- **Plastic casing**
- **Resin encapsulated option**

TU3BCP		Wound primary					
In/A		50	60	75	100	125	150
5P10	VA				3,5		
10P10	VA				3,5		

TU40CP		Wound primary								
In/A		100	125	150	200	250	300	400	500	600
5P15	VA					5				

TU_R Wound primary

Protection transformers



General features

- **Secondary:** .../5A
- **Accuracy:** 5P10 - 10P10
- **Resin encapsulated**

TU3PR		Wound primary									
In / A		50	60	75	100	125	150	200	250	300	400
5P10	VA	10	10	10	10	10	10	10	10	10	10
10P10	VA	10	10	10	10	10	10	10	10	10	10

TU50R		Wound primary			
In / A		500	600	750	800
5P10	VA	7,5	7,5	10	10
10P10	VA	7,5	7,5	12,5	12,5

TUP_R Bus-bar

Protection transformers



General features

- **Secondary:** .../5A
- **Accuracy:** 5P10, 5P10
- **Resin encapsulated**

TUP20RC		Bus-bar 80 x 20 mm or cable Ø 20 mm				
In / A		500	600	750	800	1000
5P10	VA	3,5	3,5	3,5	3,5	5
10P10	VA	5	5	5	5	5

TUP20R		Bus-bar 100 x 20 mm or cable Ø 20 mm					
In / A		750	800	1000	1200	1500	2000
5P10	VA	7,5	7,5	12,5	15	15	15
10P10	VA	10	10	15	15	20	20

TUP60R		Bus-bar 100 x 60mm or cable Ø 60 mm					
In / A		1000	1200	1500	2000	2500	3000
5P10	VA	12,5	15	15	15	15	20
10P10	VA	15	15	20	20	20	30

TUP95R		Bus-bar 100 x 95 mm or cable Ø 95 mm		
In / A		3000	4000	5000
5P10	VA	15	20	20
10P10	VA	20	30	30

Other specialities on request, consult us.

TRANSFORMERS

TPR_Bus-bar

Protection transformers



General features

- **Secondary:** .../5A
- **Accuracy:** 5P10, 5P20
- **Resin encapsulated**
- **With built-in cable option**

TPR60		Cable Ø 60 mm										
In / A		100	150	200	250	300	400	500	600	750	800	1000
5P10	VA	10	15	20	25	30	40	50	60	75	80	100
5P20	VA	5	7	10	12	15	20	25	30	38	40	50

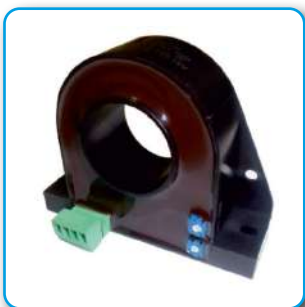
TPR80		Cable Ø 80 mm										
In / A		250	300	400	500	600	750	800	1000	1200	1500	2000
5P10	VA	12	15	22	30	35	45	48	48	48	73	97
5P20	VA	5	7	10	12	15	18	20	20	22	28	35

TPR100		Cable Ø 100 mm											
In / A		500	600	750	800	1000	1200	1500	2000	2500	3000	4000	5000
5P10	VA	15	15	20	25	30	30	40	60	65	65	80	120
5P20	VA	7	8	10	12	15	17	20	30	35	35	45	70

TPR125		Cable Ø 125 mm									
In / A		1000	1200	1500	2000	2500	3000	4000	5000		
5P10	VA	20	30	30	30	40	40	50	70		
5P20	VA	10	15	15	15	20	20	25	35		

TEH-132 Bus-bar

Hall effect sensor



General features

- **Power supply voltage:** $\pm 12V - 15V$ DC ($\pm 5\%$)
- **Load resistance:** > 1 k Ω
- **Output voltage (analogue):** ± 4 V
- **Accuracy:** $\pm 0.5\%$ CC // $\pm 1\%$ AC
- **Linearity error:** $\pm 0.5\%$
- **Offset voltage:** $< \pm 10$ mV
- **Voe thermal shunt:** $< \pm 1$ mV / $^{\circ}C$
- **Vout thermal derivative** $\pm 0.05\%$ / $^{\circ}C$
- **Response time:** < 3 μs
- **Insulation voltage:** 5 kV
- **Isolation resistance:** > 500 M Ω
- **Current consumption:** < 20 mA

TEH - 132		Cable Ø 32 mm						
I _{pn} (A)		100	200	300	400	500	600	1000
Range		± 300	± 600	± 900	± 1100	± 1200	± 1300	± 1500

TRANSFORMERS

TC_Bus-bar

Trafo-converters



General features

- **Output:** 0 - 20 mA DC
- **Operating margin:** 10-120%
- **Maximum load impedance:** 600 Ω
- **Frequency:** 50-60 Hz
- **Response time:** <200ms
- **Plastic casing**

TC40		Bus-bar 40 x 10 mm or cable \varnothing 32 mm								
In / A	50	60	75	100	125	150	200	250	300	400
Output / mA	0 - 20 mA									

TC60		Bus-bar 60 x 10 mm or cable \varnothing 51 mm								
In / A	400	500	600	750	800	1000	1200	1500	2000	
Output / mA	0 - 20 mA									

TC80		Bus-bar 80 x 30 mm or cable \varnothing 65 mm								
In / A	400	500	600	750	800	1000	1200	1500	2000	2500
Output / mA	0 - 20 mA									

TC_CV Bus-bar

Transformers with built-in measuring transducer



General features

- **Auxiliary voltage:** 10-40 V DC
- **Class:** 1
- **Operating margin:** 10-120%
- **Maximum load impedance:** 600 Ω
- **Frequency:** 50-60 Hz
- **Multirange**
- **Selectable primary current**
- **Plastic casing**

TC20CV		Bus-bar 20 x 5 mm or cable \varnothing 16 mm			
In / A	10 - 12,5 - 15 - 20	20 - 25 - 30 - 40	50 - 60 - 75 - 100	125 - 150 - 200 - 250	
Output / mA	4 - 20 mA				

TC30CV		Bus-bar 30 x 10 mm or cable \varnothing 22 mm			
In / A	20 - 25 - 30 - 40	50 - 60 - 75 - 100	125 - 150 - 200 - 250	300 - 400 - 500 - 600	
Output / mA	4 - 20 mA				

TC40CV		Bus-bar 40 x 10 mm or cable \varnothing 30 mm		
In / A	50 - 60 - 75 - 100	125 - 150 - 200 - 250	300 - 400 - 500 - 600	
Output / mA	4 - 20 mA			

TE108 Voltage transformers



General features

- **Insulation voltage:** 6kV
- **Class:** 0,5
- **Primary voltage:** 600 - 1000 V
- **Secondary voltage:** 100/110/230/400V
- **Dimension:** 108x65mm

TE108		
Vp		From 600 to 1000 V
Class 0,5	VA	10

Other ratios on request.

TE15P Voltage transformers



General features

- **Measurement range:** 80-120% Vpn
- **Charge:** 25 - 100% ($\cos \varphi = 0,8$)
- **Plastic casing**
- **Resin encapsulated option**

TE15P								
Vp/Vs		230 / 110	400 / 100	400 / 110	400 / 230	440 / 110	440 / 100	440 / 230
Class 0,5	VA	10	10	10	10	10	10	10
Class 1	VA	25	25	25	25	25	25	25

Other ratios on request.

TRANSFORMERS

TS_ Summation transformers



General features

- **Class:** 0,5 - 10VA
- **Plastic casing**

TS-		TS2	TS3	TS4	TS5
N° of sums		2	3	4	5
In/A		5 + 5 / 5	5 + 5 + 5 / 5	5 + 5 + 5 + 5 / 5	5 + 5 + 5 + 5 + 5 / 5
Class 0,5	VA	10	10	10	10

Other specialities on request, consult us.

TRS_ Summation transformers



General features

- **Class:** 0,5 - 10VA
- **Resin encapsulated**

TRS-		TRS2	TRS3	TRS4	TRS5
N° of sums		2	3	4	5
In/A		5 + 5 / 5	5 + 5 + 5 / 5	5 + 5 + 5 + 5 / 5	5 + 5 + 5 + 5 + 5 / 5
Class 0,5	VA	10	10	10	10

Other specialities on request, consult us.