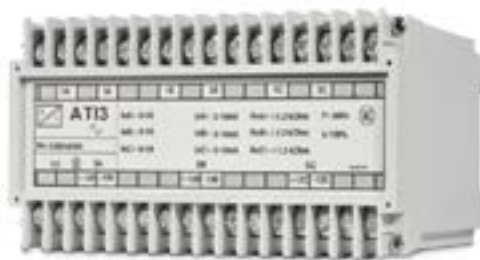


Convertidor de medida Measuring Transducer

ATW_



ENTRADAS - INPUTS	Tipo Type	Alcances - Outreach
Intensidad CA - AC Current	1	1 / 5A (.../1 // /5A)
Tensión CA - AC Voltage	2	100 - 110 - 115 - 230 - 400 - 440 V
Intensidad CC - DC Current	3	100 μ A - 5A
Tensión CC - DC Voltage	4	60 mV - 440 V
Frecuencia Hz - Hz Frequency	5	50 - 60 - 400 Hz



SALIDAS - OUTPUTS	Tipo Type	Alcances - Outreach
Intensidad CC - DC Current	1	1 - 5 - 10 - 20 mA
Intensidad CC - DC Current	2	4 - 20 mA
Tensión - Voltage	3	100 μ A - 5A
Impulsos - Impulses	4	1 - 5 - 10 // 2 - 10 V
Comunicación Communication	5	USB - RS 232 - RS 485

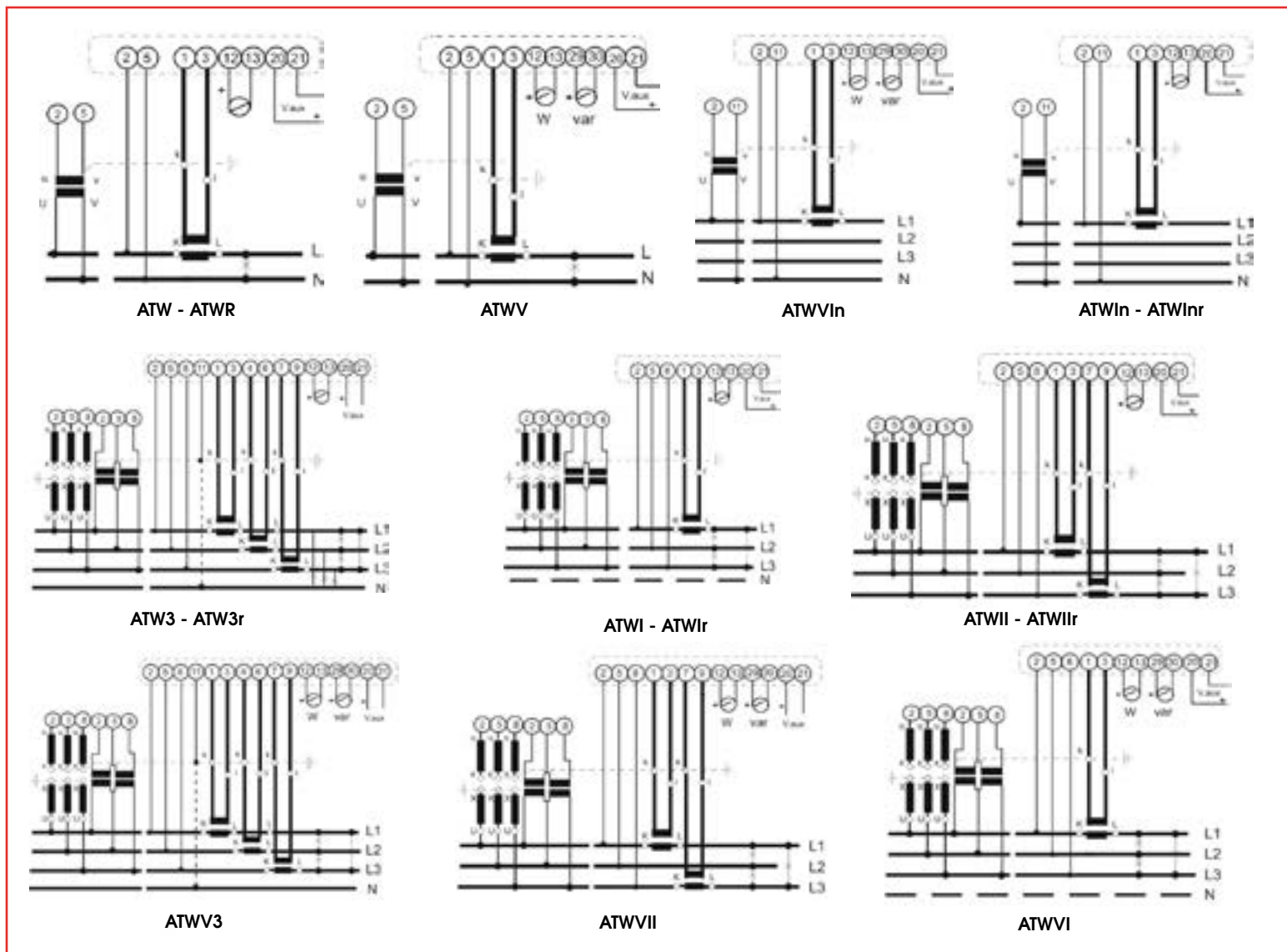
TENSIONES AUXILIARES AUXILIARY VOLTAGES	Tipo Type	Alcances - Outreach
V. Aux CA - AC Aux. v.	1	115 - 230 - 400 \pm 20% V CA - AC
V. Aux CC - DC Aux. v.	2	12 - 24 - 48 - 110 // 220 \pm 20% V CC - DC
CP200x / CP300x / CP400x	3	85 - 264 V CA - AC 90-300 V CC - DC
ATIP / ATUP / CP40	4	Universal 40 - 275 V CA - AC // CC - DC

POTENCIA ACTIVA - ACTIVE POWER	Rango Range	Entrada Input	Salida Output	V. Aux Aux. V.	Modelos Models
Monofásico - Single-phase	0 - 1,2 Pn / \pm 1,2 Pn	1 - 2	1 - 2 - 3	1 - 2	ATW
Trifásico equilibrado (3 hilos) - Balanced three-phase (3 wire)	0 - 1,2 Pn / \pm 1,2 Pn	1 - 2	1 - 2 - 3	1 - 2	ATWI
Trifásico equilibrado (4 hilos) - Balanced three-phase (4 wire)	0 - 1,2 Pn / \pm 1,2 Pn	1 - 2	1 - 2 - 3	1 - 2	ATWIn
Trifásico desequilibrado (3 hilos) - Unbalanced three-phase (3 wire)	0 - 1,2 Pn / \pm 1,2 Pn	1 - 2	1 - 2 - 3	1 - 2	ATWII
Trifásico desequilibrado (3 sistemas) - Unbalanced three-phase (3 systems)	0 - 1,2 Pn / \pm 1,2 Pn	1 - 2	1 - 2 - 3	1 - 2	ATW3

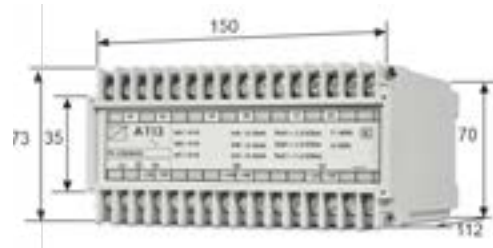
POTENCIA REACTIVA - REACTIVE POWER	Rango Range	Entrada Input	Salida Output	V. Aux Aux. V.	Modelos Models
Monofásico - Single-phase	0 - 1,2 Pn / \pm 1,2 Pn	1 - 2	1 - 2 - 3	1 - 2	ATWr
Trifásico equilibrado (3 hilos) - Balanced three-phase (3 wire)	0 - 1,2 Pn / \pm 1,2 Pn	1 - 2	1 - 2 - 3	1 - 2	ATWir
Trifásico equilibrado (4 hilos) - Balanced three-phase (4 wire)	0 - 1,2 Pn / \pm 1,2 Pn	1 - 2	1 - 2 - 3	1 - 2	ATWInr
Trifásico desequilibrado (3 hilos) - Unbalanced three-phase (3 wire)	0 - 1,2 Pn / \pm 1,2 Pn	1 - 2	1 - 2 - 3	1 - 2	ATWIIr
Trifásico desequilibrado (3 sistemas) - Unbalanced three-phase (3 systems)	0 - 1,2 Pn / \pm 1,2 Pn	1 - 2	1 - 2 - 3	1 - 2	ATW3r

POTENCIA ACTIVA + REACTIVA ACTIVE + REACTIVE POWER	Rango Range	Entrada Input	Salida Output	V. Aux. Aux. V.	Modelos Models
Monofásico - Single-phase	0 - 1,2 Pn / ±1,2 Pn	1 - 2	1 - 2 - 3	1 - 2	ATWV
Trifásico equilibrado (3 hilos) - Balanced three-phase (3 wire)	0 - 1,2 Pn / ±1,2 Pn	1 - 2	1 - 2 - 3	1 - 2	ATWVI
Trifásico equilibrado (4 hilos) - Balanced three-phase (4 wire)	0 - 1,2 Pn / ±1,2 Pn	1 - 2	1 - 2 - 3	1 - 2	ATWVIn
Trifásico deequilibrado (3 hilos) - Unbalanced three-phase (3 wire)	0 - 1,2 Pn / ±1,2 Pn	1 - 2	1 - 2 - 3	1 - 2	ATWVII
Trifásico deequilibrado (3 sistemas) - Unbalanced three-phase (3 systems)	0 - 1,2 Pn / ±1,2 Pn	1 - 2	1 - 2 - 3	1 - 2	ATWV3

Diagrama de conexión - Connection diagram

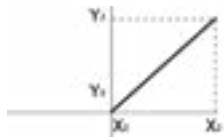


Dimensiones - Dimensions

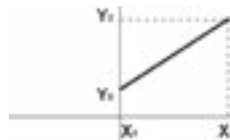


ATW_

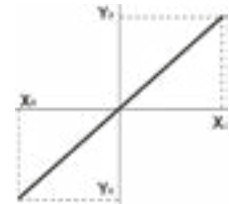
Curvas de transferencia - Transfer curves



A



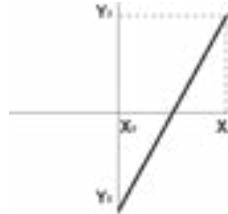
B



C



D



E



F

	ATW	ATWI	ATWIn	ATWII	ATW3	ATWr	ATWIr	ATWInr	ATWIIr	ATW3r	ATWV	ATWVI	ATWVIn	ATWVII	ATWV3
A	•	•	•	•	•	•	•	•	•	•	•	•	•	•	•
B	•	•	•	•	•	•	•	•	•	•	•	•	•	•	•
C	•	•	•	•	•	•	•	•	•	•	•	•	•	•	•
D	•	•	•	•	•	•	•	•	•	•	•	•	•	•	•
E	•	•	•	•	•	•	•	•	•	•	•	•	•	•	•
F		•	•	•	•	•	•	•	•	•	•	•	•	•	•