

Convertidor de medida Measuring Transducer

ATU_



ENTRADAS - INPUTS	Tipo Type	Alcances - Outreach
Intensidad CA - AC Current	1	1 / 5A (.../1 // /5A)
Tensión CA - AC Voltage	2	100 - 110 - 115 - 230 - 400 - 440 V
Intensidad CC - DC Current	3	100 μ A - 5A
Tensión CC - DC Voltage	4	60 mV - 440 V
Frecuencia Hz - Hz Frequency	5	50 - 60 - 400 Hz



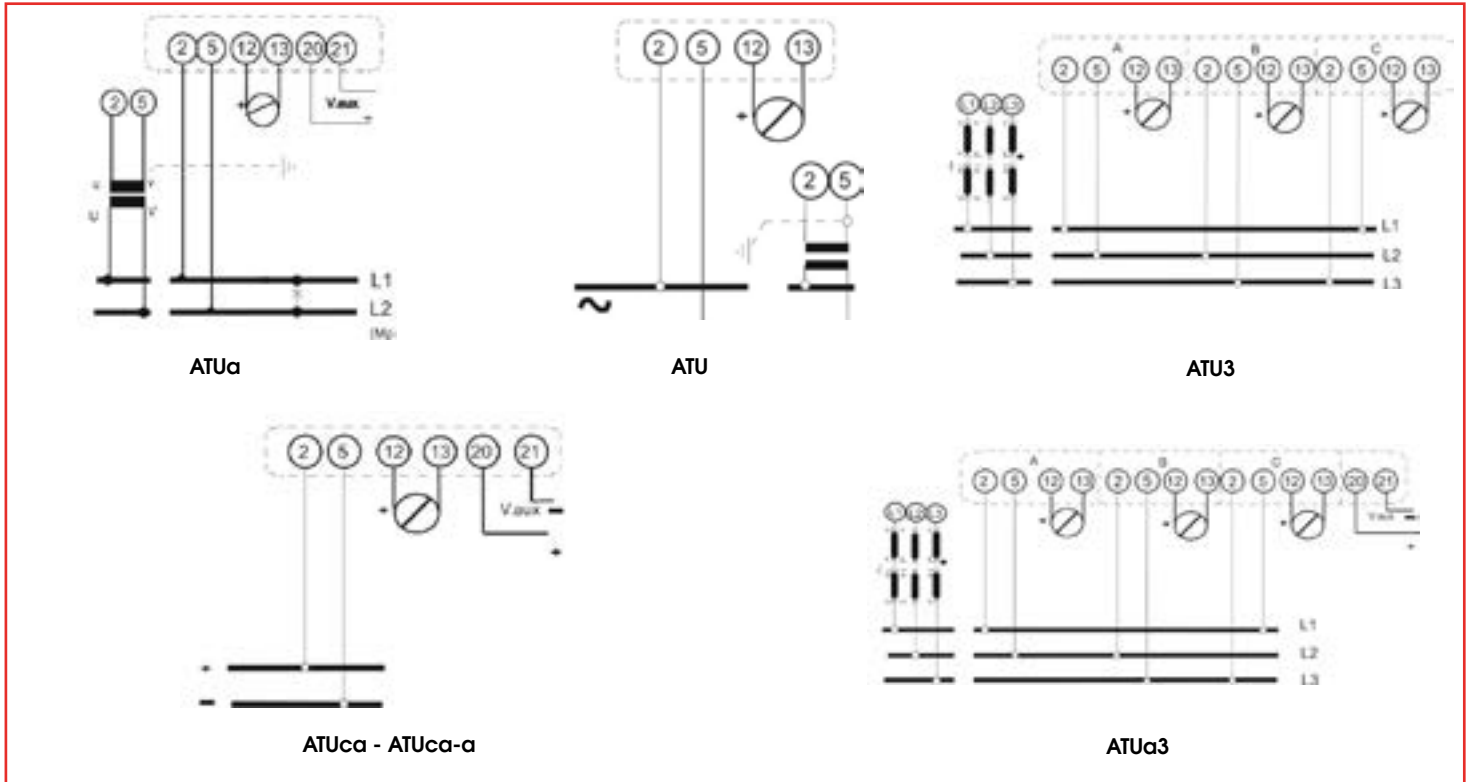
SALIDAS - OUTPUTS	Tipo Type	Alcances - Outreach
Intensidad CC - DC Current	1	1 - 5 - 10 - 20 mA
Intensidad CC - DC Current	2	4 - 20 mA
Tensión - Voltage	3	100 μ A - 5A
Impulsos - Impulses	4	1 - 5 - 10 // 2 - 10 V
Comunicación Communication	5	USB - RS 232 - RS 485

TENSIONES AUXILIARES AUXILIARY VOLTAGES	Tipo Type	Alcances - Outreach
V. Aux CA - AC Aux. v.	1	115 - 230 - 400 \pm 20% V CA - AC
V. Aux CC - DC Aux. v.	2	12 - 24 - 48 - 110 // 220 \pm 20% V CC - DC
CP200x / CP300x / CP400x	3	85 - 264 V CA - AC 90-300 V CC - DC
ATIP / ATUP / CP40	4	Universal 40 - 275 V CA - AC // CC - DC

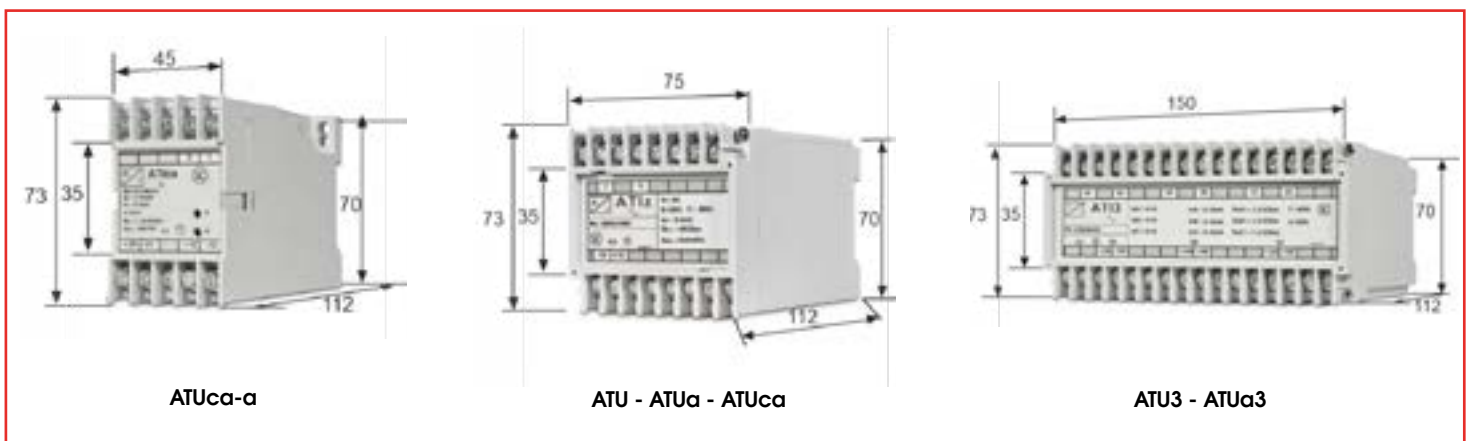
POTENCIA ACTIVA - ACTIVE POWER	Rango Range	Entrada Input	Salida Output	V. Aux Aux. V.	Modelos Models
Monofásico - Single-phase	0,4 - 1,2 Un	2	1	-	ATU
Triple, monofásico - Triple, single-phase	0,4 - 1,2 Un	2	1	-	ATU3
Monofásico - Single-phase	0, - 1,2 Un	2	1 - 2 - 3	1 - 2	ATUa
Triple, monofásico - Triple, single-phase	0 - 1,2 Un	2	1 - 2 - 3	4	ATUa3

POTENCIA REACTIVA - REACTIVE POWER	Rango Range	Entrada Input	Salida Output	V. Aux Aux. V.	Modelos Models
Monofásico - Single-phase	\pm 0 - 1,2 Un	4	1 - 2 - 3	1 - 2	ATUca
Monofásico - Single-phase	\pm 0 - 1,2 Un	4	1 - 2 - 3	2	ATUca-a

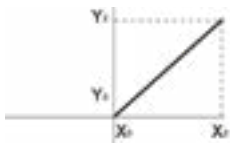
Diagrama de conexión - Connection diagram



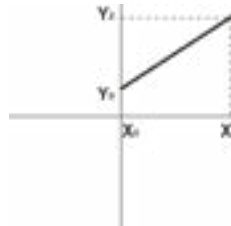
Dimensiones - Dimensions



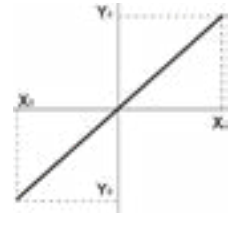
Curvas de transferencia - Transfer curves



ATU - ATU3 - ATUa - ATUa3 -
ATUca - ATUca-a



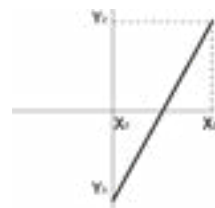
ATUA3 - ATUca - ATUca-a



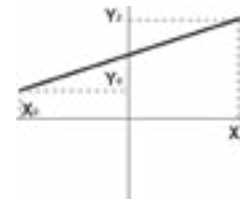
ATUca - ATUca-a



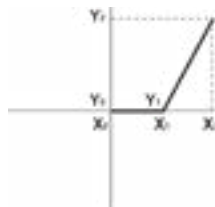
ATUca - ATUca-a



ATUca - ATUca-a



ATUca - ATUca-a



ATUa3